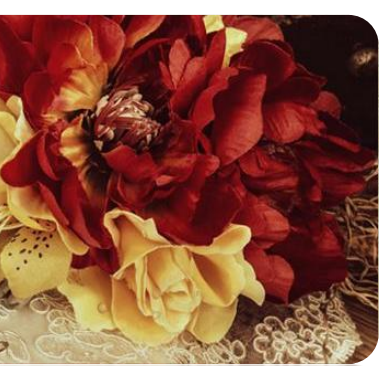




Designer Wedding dresses





Elowen



Blush Boho Wedding Dress with Tulle Skirt and Illusion Sweetheart Featuring Sheer Back and Beaded Sash

Lingerette & Boutique



Lingerette & Boutique

Elowen



Blaire

Teal Wedding Dress with Intensive Beaded Venice Lace Appliqué featuring V Neckline, Deep V Cut Back



Blaire



LINGERETTE & BOUTIQUE



Mermaid lace wedding dress with pearl beading.



Sylvia



Romantic Sheer Neckline Boho A line Wedding Dress with Stunning Dark Shade of Underlay





Off Shoulder A Line Wedding Dress from Soft French Lace with Illusion Neckline



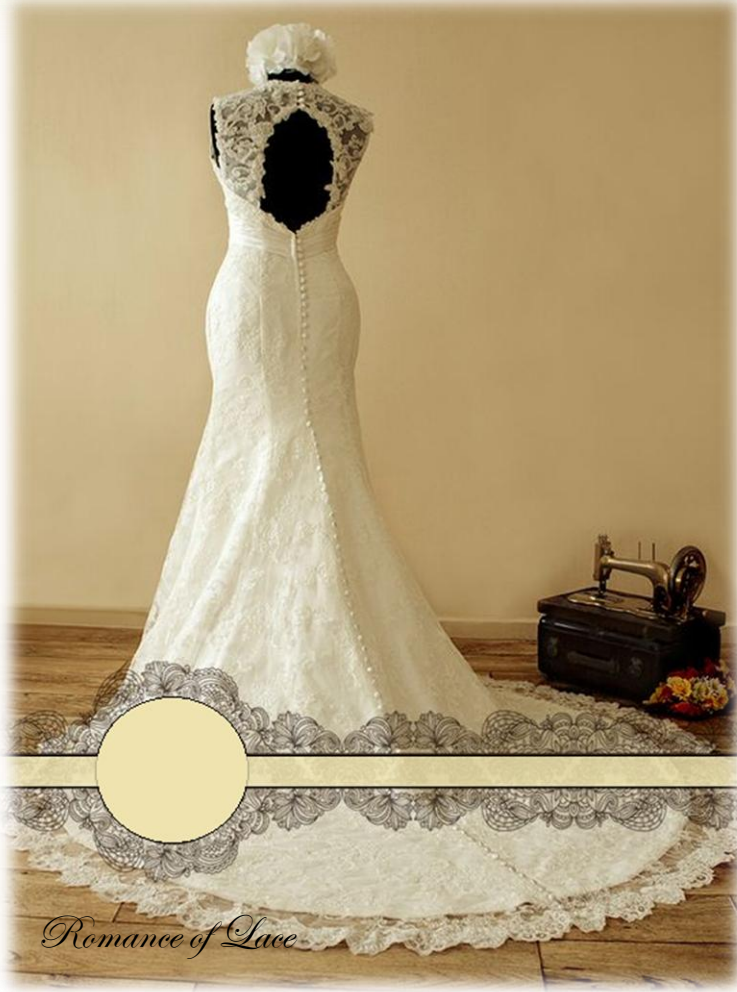








Romance of Lace



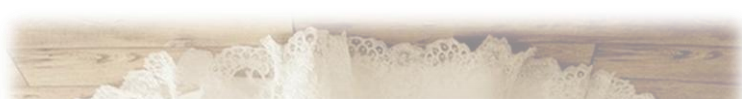
Romance of Lace



Romance of Lace



Romance of Lace





Freazya



Ivory colour

Freazya

Asymmetric Illusion Neckline Lace Wedding
Dress with Chapel Train Spaghetti Straps
Across V-Cut Back and Satin Sash







Victoria

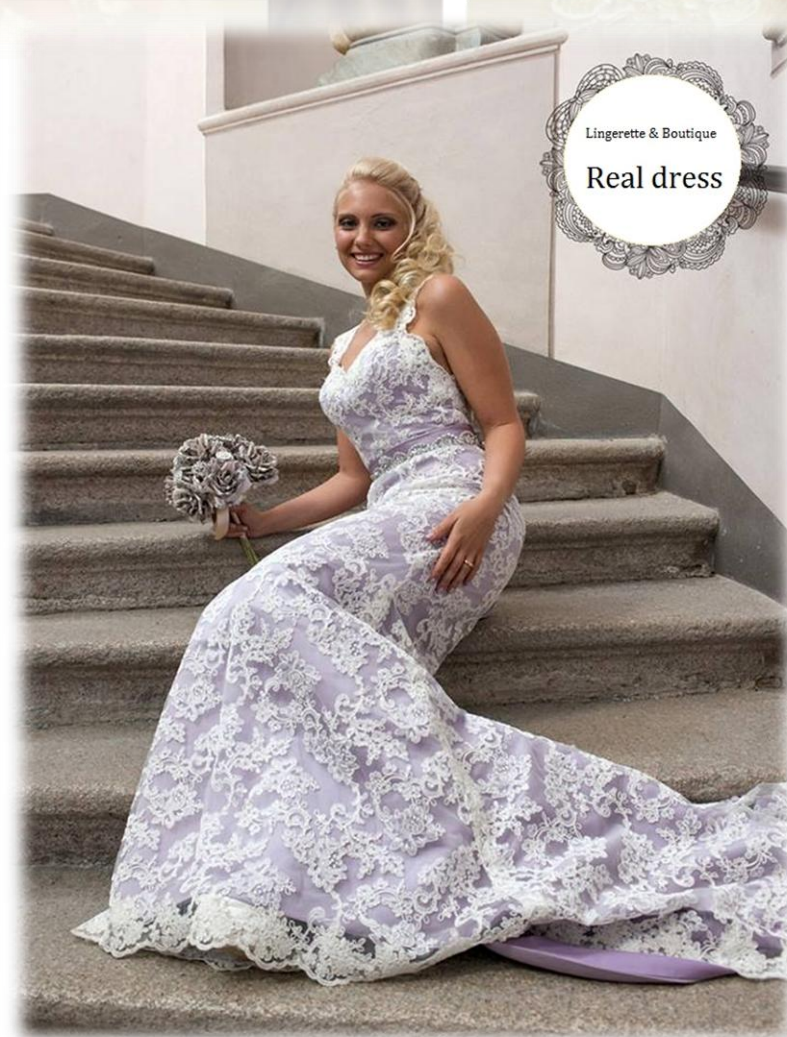


Dusty purple

Victoria



Style Lace Wedding Dress with Sweetheart Neckline and Deep Keyhole Featuring Hand Beaded Satin Sash



Lingerette & Boutique

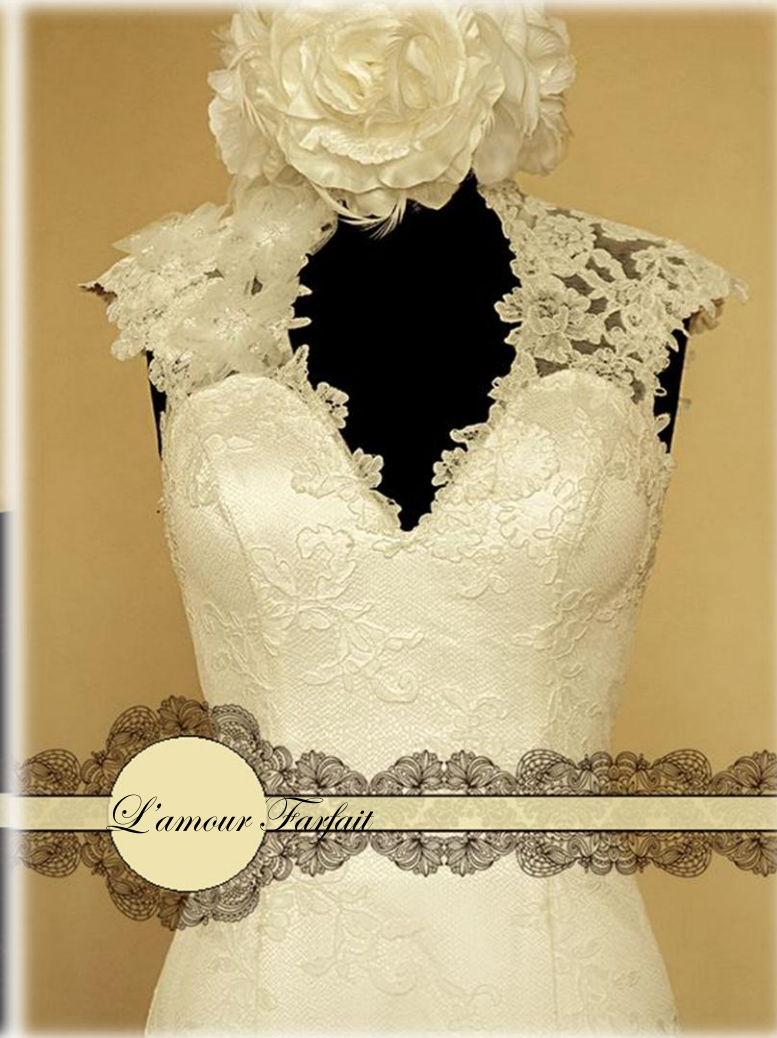
Real dress







L'amour Farfait





Vintage inspired floral pattern lace



Golden Underlay Slim A-line Style Lace Wedding Dress with Small Sweep Train Featuring Sweetheart Neckline and Deep Sexy V-Cut Back





Dianne



Dianne

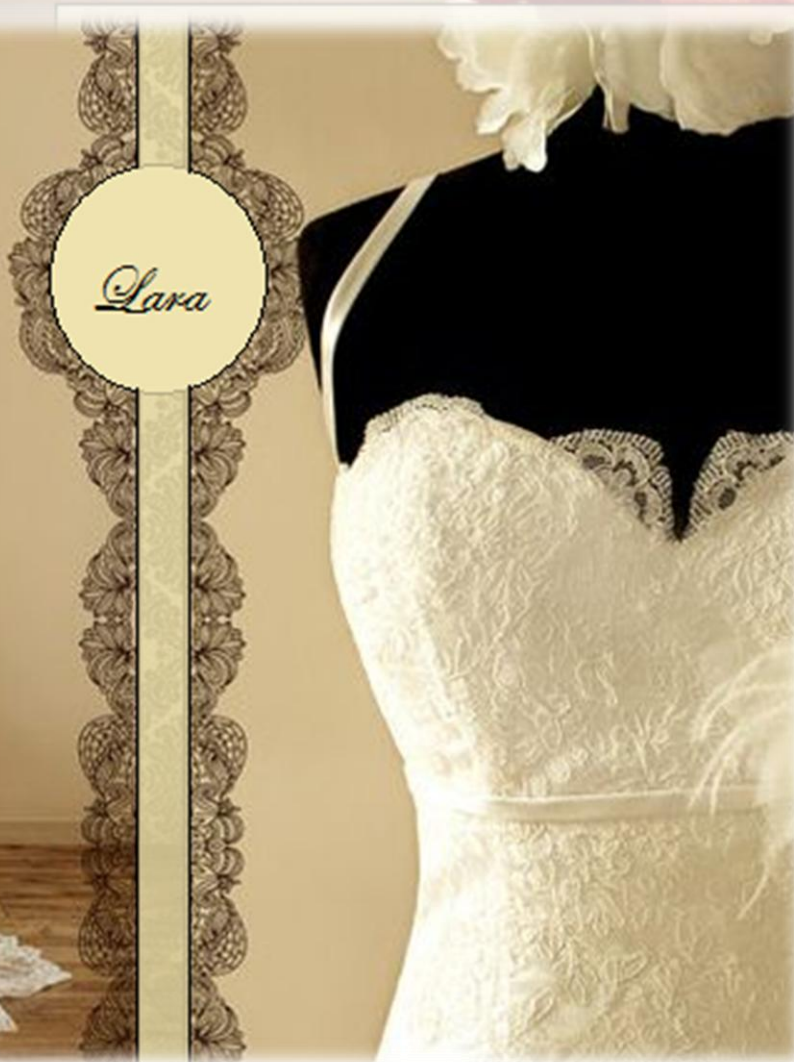
Materials: applique, satin, tulle



Strapless Princess ball gown lace and tulle with removable sash.



Dianne







Chenay



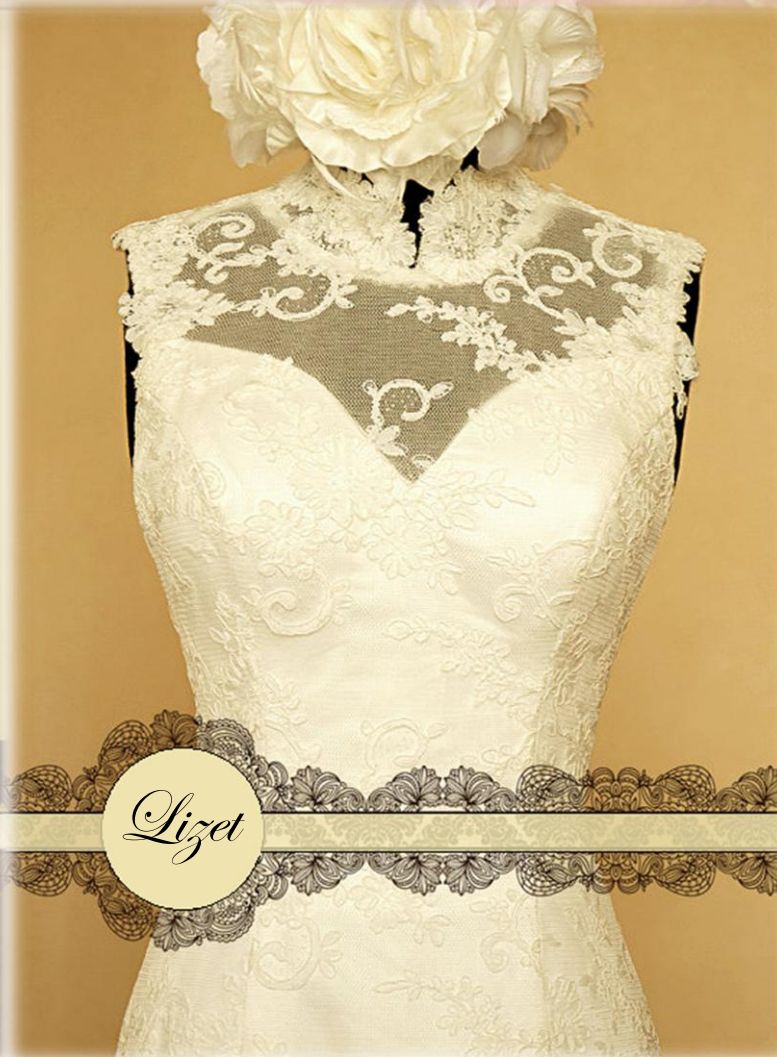
Chenay



Chenay



Chenay





Isabelle





Odette



Corset Ball Gown Ruffle Skirt Featuring
Alencon Lace Appliqué with Rhinestone
Hand Beadwork, Slim Straps and Zipper



Odette

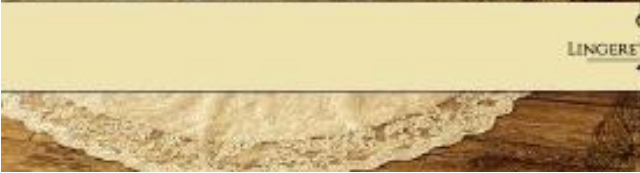
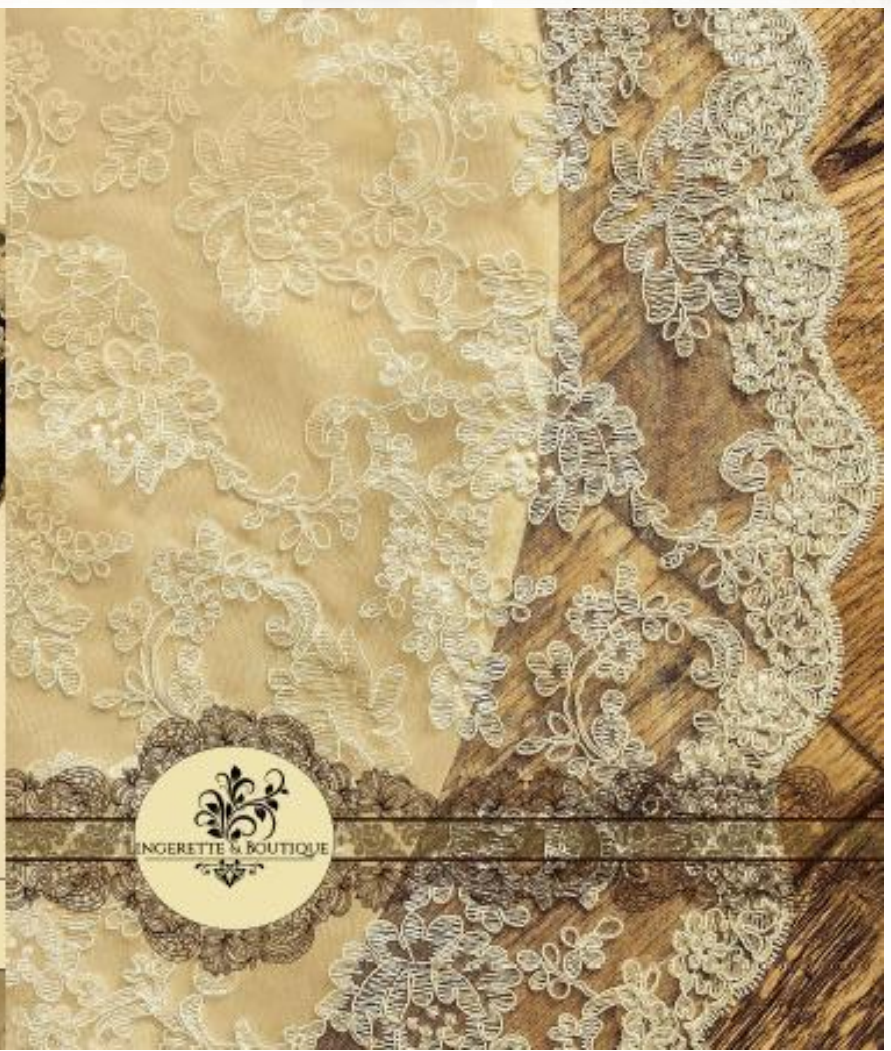
Materials: lace, satin, organza, beads

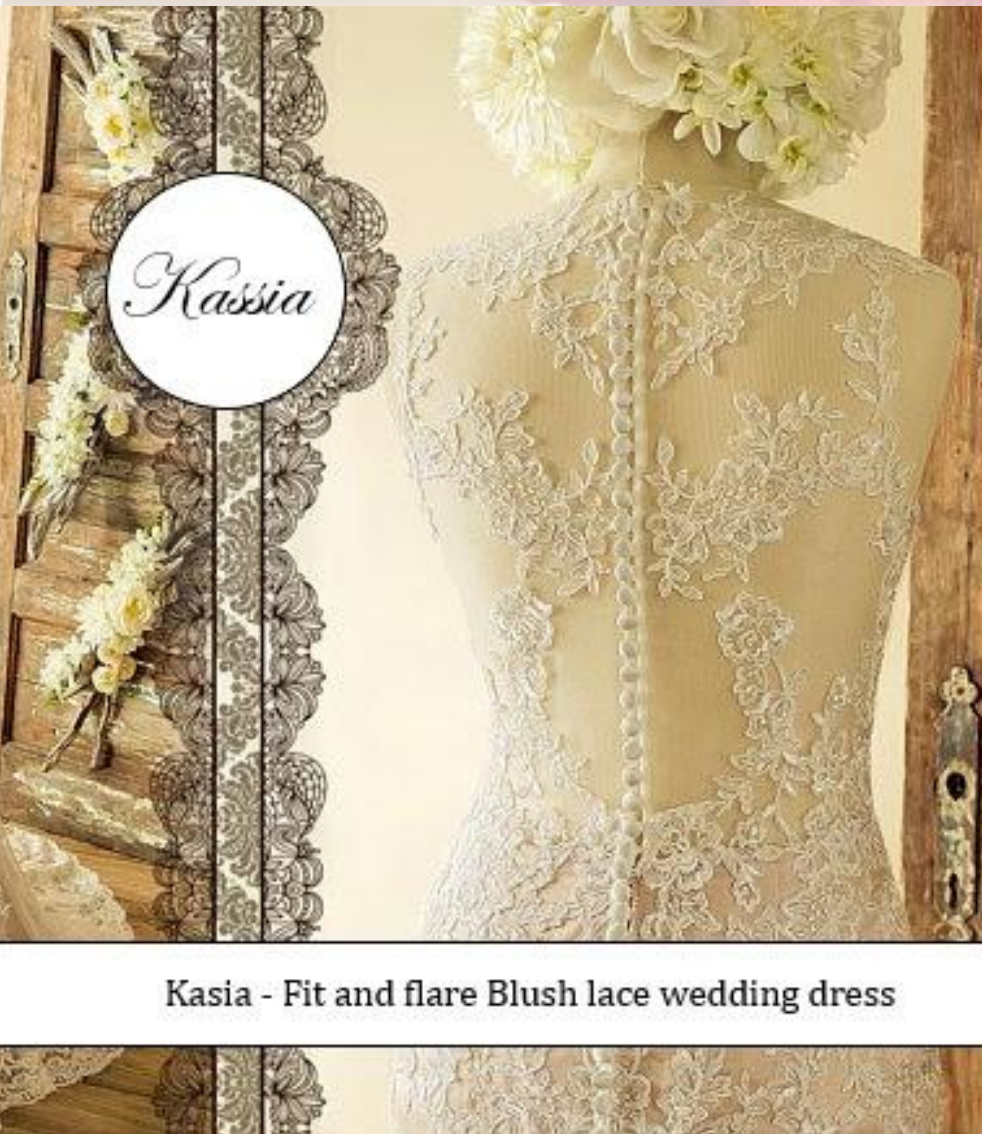




Adeline - Mint lace wedding dress







Kasia - Fit and flare Blush lace wedding dress





Pricelist

Vernita - R10 400	Chenay - R8 700	Blaire - R 9 000 without beading R12 700 with beading
Romance of Lace - R10 000	Liza - R9 800	Eliane - R7800
Freazya - R11 000	Lara - R9 000	Madeline - R9 600 without sash R11 000 with sash
Victoria - R10 700	Emma - R9 000	Janine - R8 500
Lizet - R10 000	Isabelle - R13 400	Desire - R8 400
Odette - R17 000	Amelia - R9 800	Adeline - R9 000
L'amour Parfait - R9 900	Cansuella - R 9 600	Tarryn - R9000 without sash
Margot - R22 300	Dianne - R9 800	Kassia - R11 200
Sylvia - R11 200	Elowen - R10 500	

Measurements

Custom Measurements

I STRONGLY RECOMMEND YOU TO GET YOUR MEASUREMENTS WITH HELP OF A PROFESSIONAL TAILOR FOR CORRECT RESULTS OF THE MEASUREMENTS TO AVOID ANY MISTAKES

Commonly Necessary Measurements for all of my dresses :)



BUST

Please take the tape around your back and bring it across your nipple line. It should be the **FULLEST PART** of your breast.



WAIST

You should measure the **SMALLEST PART** of your waist. Typically it's a few centimeters above your belly button.



HIPS

You should take the measurement around your hips at the **FULLEST POINT**, usually located 7 to 10 inches below your natural waist.



SHOULDER TO NIPPLE

Please measure from the top center of your **SHOULDER TO YOUR NIPPLE**. You should stand straight and measure along the **FRONT** of your body straight down till nipple.



SHOULDER TO WAIST

Please measure from the top center of your **SHOULDER TO YOUR NATURAL WAISTLINE** (smallest part of your waist). You should stand straight and measure along the **FRONT** of your body, over the **FULLEST PART** of your chest.



HEIGHT FROM SHOULDER TO FLOOR

Please measure from the top center of your **SHOULDER TO THE FLOOR**. You should stand straight and measure along the **FRONT** of your body, over the **FULLEST PART** of your chest.

PLEASE DON'T FORGET TO ADD YOUR HILLS/SHOES IN THIS MEASUREMENT.



HEIGHT FROM SHOULDER TO HEM For Short or Knee Length Dresses

Please measure from the top center of your **SHOULDER TO YOUR PREFERRED, DESIRED HEMLINE**. You should stand straight and measure along the **FRONT** of your body over the **FULLEST PART** of your chest.

PLEASE DON'T FORGET TO ADD YOUR HILLS/SHOES IN THIS MEASUREMENT.

Additional Custom Measurements

Sometimes I need additional measurements. Usually I need them if your dress style or body type required more detailed measurements :)



SHOULDER TO SHOULDER

Please measure from the edge of your shoulder socket all the way over to the same point on your other shoulder along the back.



NECK

Please measure along your natural contour of your neck, holding the tape measure comfortably against your skin.



ARM HOLE

Please measure from your shoulder down under your arm pit and back up to your shoulder.



SLEEVE LENGTH

Please measure from your shoulder point to where you want dress sleeve ends. Please bent your arm a little while taking this measurements.



BICEPS

Please measure around of your biceps.



AROUND MEASUREMENT OF ARM WHERE THE SLEEVE ENDS

Please measure around your arm where the sleeve ends. I need this measurement for 3/4 or other custom length sleeves.



WRIST

Please measure around your wrist.



Order your dream dress...

1. Select your dress
2. Your dress will be custom made according to your exact measurements. Measurements needed above.
3. We can make your dress in any colour of your choice
4. Do you have a specific dress in mind but not in our catalogue? Please email us a picture and we will provide a free quote on your dream dress.
5. Courier cost excluded.
6. Prices are subject to change without prior notice.
7. We will need 10-12 weeks to custom make your dress.
8. 60% or full payment required.

Contact...

Email : lingeretteboutique@gmail.com

Cell : Annelize 076 152 0166

Facebook : Lingerette & Boutique

Website : lingeretteboutique.wixsite.com/home